

Accessories

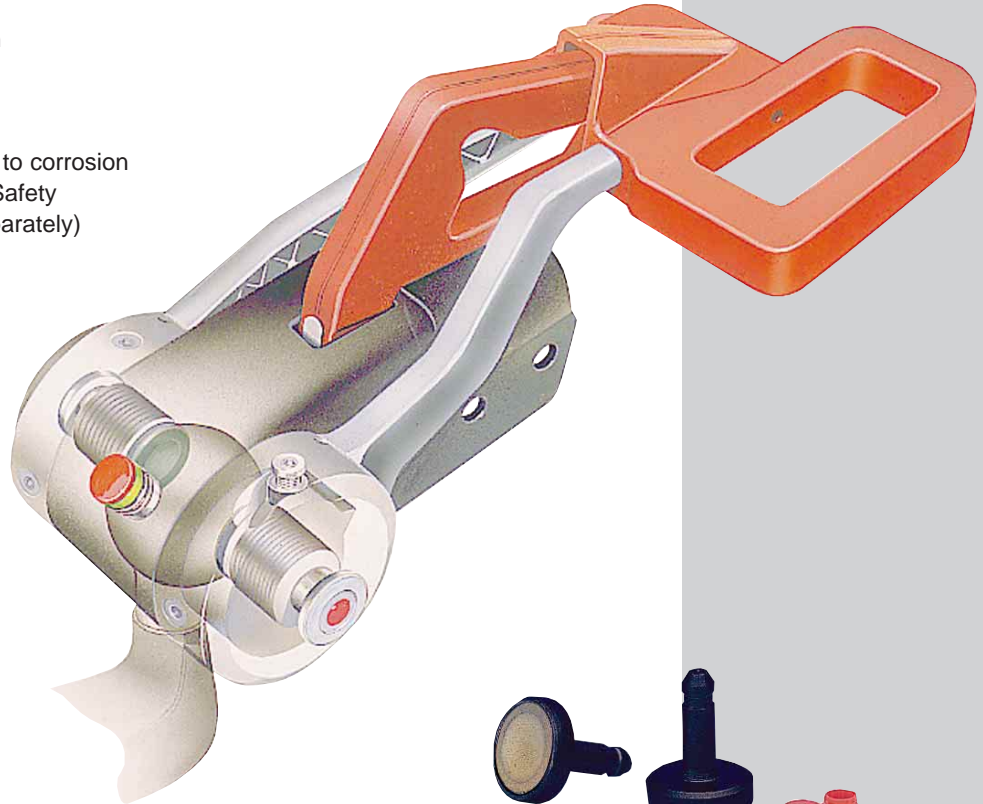
AL-KO

Vehicle Technology

AKS 2700 Stabiliser

Product Features

- Easy to use - single lever action
- Simple to fit
- Improves towing stability
- Light and compact design
- Built for long life and resistance to corrosion
- Can be retro-fitted with AL-KO Safety Anti-Theft Device (available separately)
- Quick change friction pads
- Capacity increased to 2700kg
- Colour co-ordinated handle
- Suitable for use on most overrun devices *



Friction Pads for AKS 2700 - Available Separately

The AL-KO AKS 2700 Stabiliser with easy to replace friction pads makes towing safer. Developed for caravan applications with a maximum capacity of 2700 kg, it is equally suitable for car and trailer combinations to improve safety and provide a more comfortable ride.

Operation is simplicity itself. Couple the trailer and a unique visual indicator shows when the coupling is engaged. Lower the stabiliser handle and cam operated pads grip the tow ball to dampen movement between the vehicle and its load. (This improves towing stability by up to 25%). Raise the handle and the stabiliser disengages leaving the trailer coupled but with the tow ball free to move for easier on-site manoeuvring.

AL-KO stabilisers are made to last. The friction pads have been tested and exceeded a 50,000km lifespan; the whole assembly is designed and manufactured to resist corrosion.

AL-KO are able to supply the AKS 2700 to all leading caravan manufacturers, so when you buy a new caravan, for peace of mind insist on an AL-KO AKS 2700 Stabiliser. If you want to ensure your prize livestock or horses arrive in peak condition, fit the AKS 2700, with its 2700 kg capacity.



AKS 2000/ 2500/2700 can also be retro-fitted with AL-KO Safety Anti-Theft Device - Available Separately

* Not suitable for use on 360° rotating shafts.

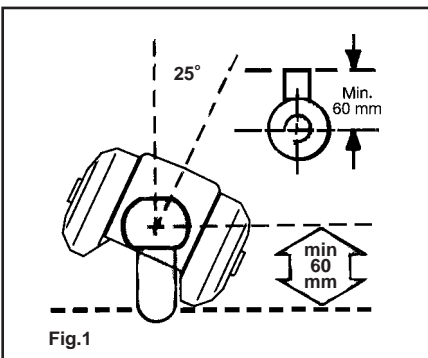
Accessories

Specification and Technical Data

Overrun Assembly

One version of the AKS 2700 has now been introduced to fit most overrun assemblies* (AL-KO and non AL-KO assemblies). For AL-KO overrun assemblies, the two fixing holes are on the side (horizontal). The forward fixing hole on the AKS 2700 is slotted to accommodate slight variations in distance between the two fixing holes, found on different types of overrun assemblies. The fixing holes for non AL-KO overrun assemblies can be distinguished by having the front fixing hole on the side and the rear fixing hole on the top of the overrun shaft.

* Not suitable for use on 360° rotating shafts.



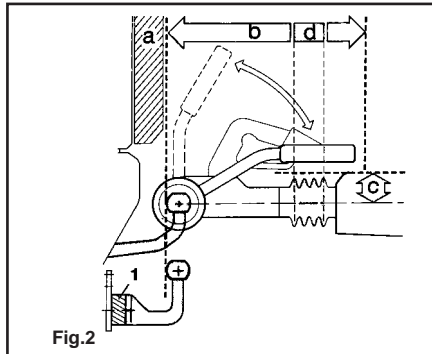
Application Information

AKS 2700 has been specifically designed for use with towbars manufactured to ISO 1103:1987. Most vehicle manufacturers towbars, especially "swan neck" type, will be designed to meet ISO 1103. There must be a 60 mm clearance around the towball (See Fig.1), to ensure the free movement of the AKS 2700 head achieves the ISO standard of 25 degrees. To ensure this maximum of 25 degrees axial rotation with a "bolt-on towball" type towbar, AL-KO supply as part of the kit an extended neck bolt on towball, forged from steel and then zinc plated for protection. With an AKS 2700 fitted the rotation of the overrun shaft will be a maximum of 25 degrees.

Clearances

Check the following to ensure correct operation of the stabiliser handle (See Figure 2).

- The area above the towing ball (a) of the vehicle must be free from vehicle components or attachments (e.g. spare wheel, vehicle overhang, etc. - check with your vehicle manufacturer if in any doubt).



The clearance for the stabiliser handle must be at least 340mm (b) plus the stroke movement 85mm to 100mm (d), which equals a total of 440mm when used in conjunction with an AL-KO overrun assembly.

The maximum distance between the centre of the towball and top of the overrun assembly, or fairing if fitted, is 50mm (c) to ensure both coupling handle and stabiliser handle do not foul on operation. Maintain the same clearances for other manufacturers overrun assemblies.

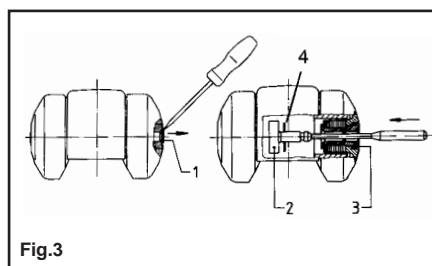
Note: Should the towing vehicle be fitted with a "bolt-on ball" type towbar, and the above clearances not be achievable, then the spacer block provided in the AKS 2700 kit should be used (Fig. 2, item 1).

Handbrake Lever

The AKS 2700 is designed to be used with overrun assemblies where the handbrake lever is mounted on the right, viewed by someone facing the direction of travel. Should the overrun assembly have the handbrake lever on the left then a replacement handle (AL-KO part number 581 158 & 581 159 will be required) but extra care should be taken to check the replacement handle does not foul on any fairing fitted.

Friction Pads Replacement Fig 3 (AKS 2700)

Use a screwdriver to remove protective caps item 1. Press worn out friction pad item 2 inwards and remove, use punch and hammer. Insert the new friction pads from below with the pin in the sleeve and press in as far as possible. Also reinsert adjusting washers item 4.



Fitting Information

The AKS 2700 contains all the parts required for fitting to an overrun assembly, plus a comprehensive handbook.

It is important to ensure the fixing bolts are fastened to the correct torque. For bolts marked 8.8 on the head the correct torque is 86Nm (63.5lb ft.), and for bolts marked 10.9 the correct torque is 120Nm (88.5 lb ft.).

Operation

The AKS 2700 is designed to be user friendly with a single lever action. With the friction pad stabiliser disengaged the AKS 2700 acts as a normal coupling head, and provides easier manoeuvrability in confined spaces.

IMPORTANT -the AKS 2700 should only be used on a CLEAN, DEGREASED TOWBALL, otherwise contamination of the friction pads could occur and reduce the effectiveness of the stabiliser.

Accessories and spares for AKS 2700

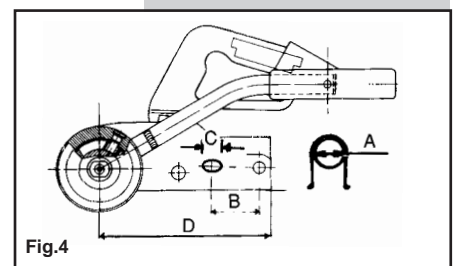
Additional towball kits (AL-KO Part No.286058), and replacement friction pads kits for the AKS 2700 (AL-KO Part No.287763) are available. A brass barrel lock (AL-KO Part No.203141) is available. Once inserted and locked into place by its key, the lock prevents the coupling mechanism from operating, this prevents hitching or unhitching. Also available for the AKS 2700 is the new AL-KO Safety Anti-Theft Device Part No. 247632. This unit is designed to cover the coupling handle to prevent theft of the caravan/ stabiliser unit (see separate leaflet for further details).

In addition a range of spares are available should any component become damaged or broken.

Also available from AL-KO

- Spare Wheel Carriers
- Wheel Chocks
- Corner Steady Braces
- Wheel Spanners & Torque Wrenches
- Positive attachment indicator couplings & locks
- AKS 1300 Stabilisers
- Side Lift Jacks
- Security Devices
- Soft Docks, Safety Balls & Soft Balls

In line with our company policy of constant improvement, we reserve the right to change the specifications without notice.



Part No.	Gross Vehicle Weight		Max Nose Load kg	Fixing Bolts Positions	Draw Bar Shaft Diameter A mm Fig. 4	Fixed Hole Spacing B mm Fig. 4	Hole C mm Fig. 4	Length D mm Fig. 4	Wt kg
	Min GVW kg	Max GVW kg							
235500	200	2700	100	2 x horizontal * 1 x horizontal front** 1 x vertical rear**	35, 40, 50 45 + 50	50 - 54 40	12	177	5

* for AL-KO overrun assemblies ** for other overrun assemblies